

Flat 3, 22 Park Row, Leeds, Leeds, LS1 5HA  
£1,550 Per month

**V&L**  
PROPERTIES



**Flat 3, 22 Park Row, Leeds, Leeds, LS1 5HA**

**£1,550 Per month**

**Council Tax Band: C**

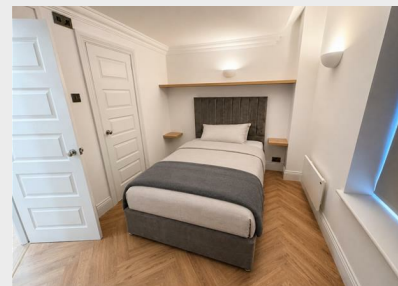
£250 discount off first months rent! (July contracts start dates only)

Welcome to this stunning apartment located at 22, Park Row in the vibrant city of Leeds, West Yorkshire. This modern residence offers a perfect blend of style and comfort, making it an ideal choice for those seeking a contemporary living space in a bustling urban environment.

The recently refurbished apartment features a beautiful entrance reception to the building, providing security and a stunning design.

The layout of the flat is thoughtfully designed to maximise natural light, creating a warm and inviting atmosphere throughout. With two well-appointed bedrooms & bathrooms, this property is perfect for small





22 Regent Street  
Leeds  
LS2 7QA  
01133 225737  
info@vgl-properties.co.uk  
vgl-properties.co.uk

Energy Efficiency Rating		
	Current	Potential
<i>Very energy efficient - lower running costs</i>		
(92 plus) <b>A</b>		
(81-91) <b>B</b>		
(69-80) <b>C</b>		
(55-68) <b>D</b>		
(39-54) <b>E</b>		
(21-38) <b>F</b>		
(1-20) <b>G</b>		
<i>Not energy efficient - higher running costs</i>		
<b>England &amp; Wales</b>		EU Directive 2002/91/EC 